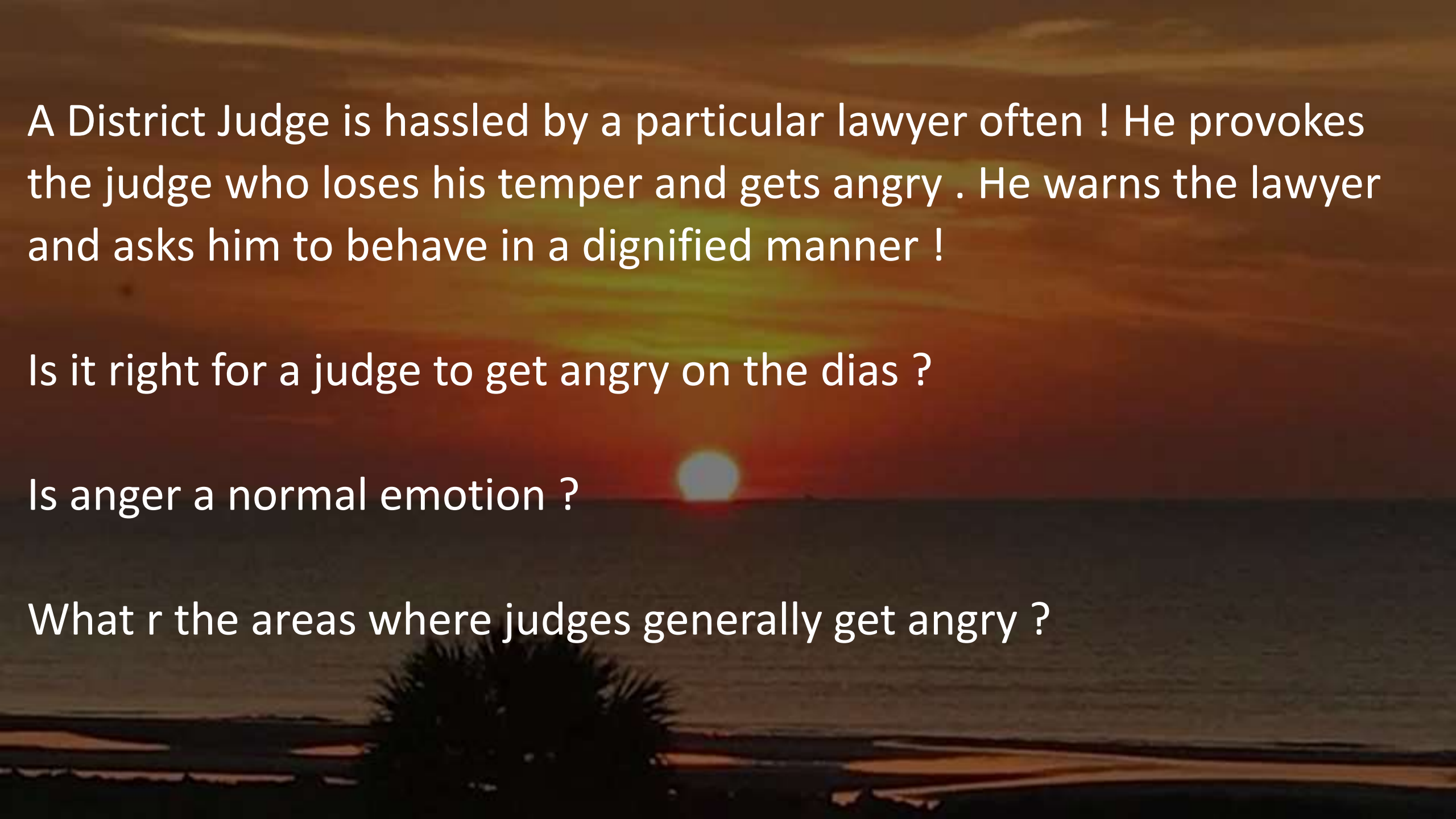


A sunset over the ocean with a palm tree silhouette in the foreground. The sun is low on the horizon, creating a bright glow and casting a reflection on the water. The sky is a mix of orange, red, and yellow. The foreground shows the dark silhouette of a palm tree and the dark water of the ocean.

# Developing Communication Strategies

- Dr. Harish Shetty

A sunset over a beach with a palm tree silhouette in the foreground. The sky is a mix of orange, red, and yellow, with the sun low on the horizon. The water is dark, and the beach is visible in the foreground.

A District Judge is hassled by a particular lawyer often ! He provokes the judge who loses his temper and gets angry . He warns the lawyer and asks him to behave in a dignified manner !

Is it right for a judge to get angry on the dias ?

Is anger a normal emotion ?

What r the areas where judges generally get angry ?

# Angered Communication

A sunset over the ocean with a palm tree silhouette in the foreground. The sky is a mix of orange, red, and yellow, with the sun low on the horizon. The water is dark, and the foreground shows a dark silhouette of a palm tree and some beach elements.

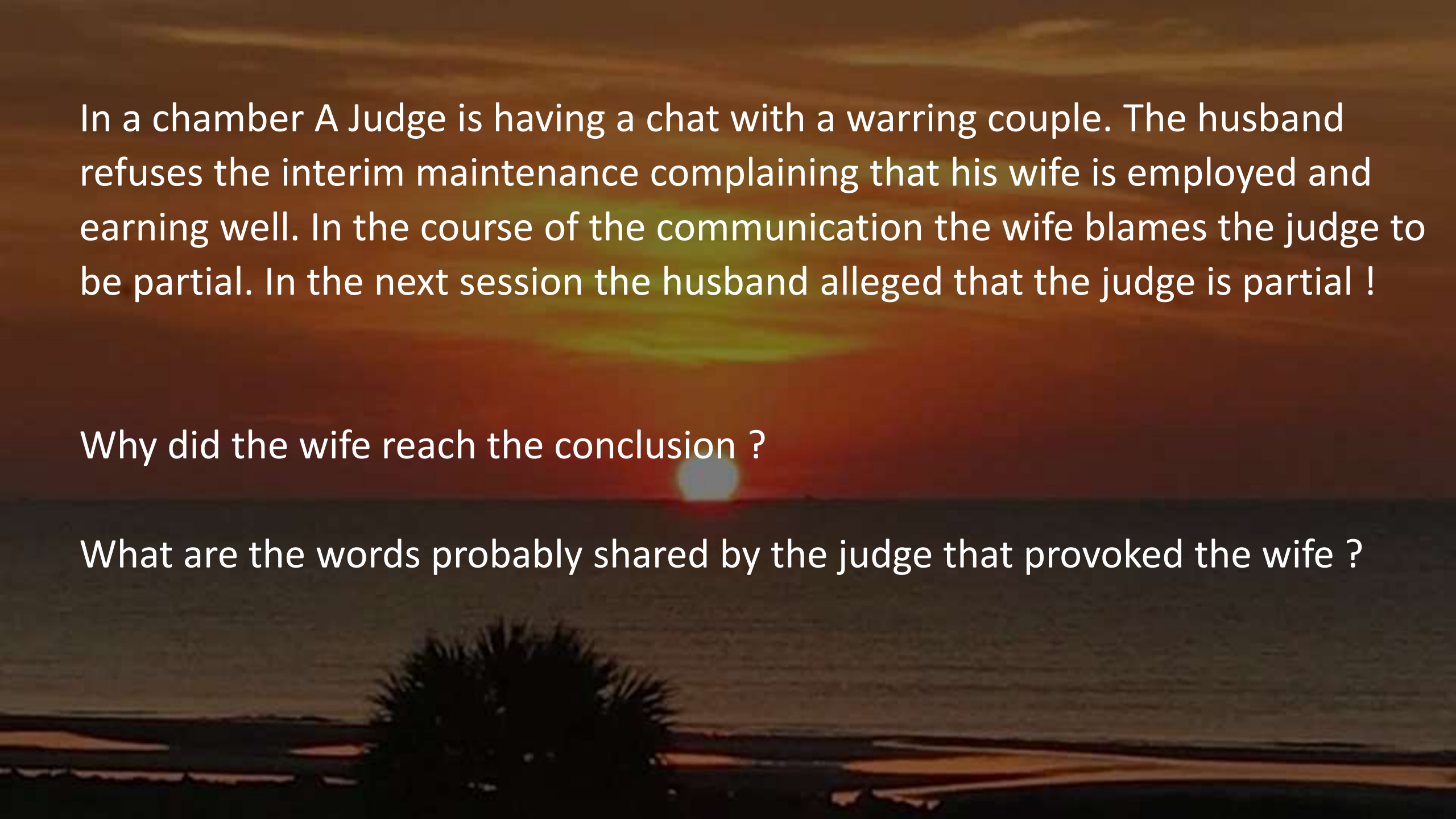
Anger is a normal emotion

Anger is necessary

Anger is also compassion

Aggression can hurt

Humiliation can hurt

A sunset scene over the ocean. The sun is a bright white circle on the horizon, surrounded by a red and orange glow. The sky transitions from orange to a darker brown. In the foreground, there is a dark silhouette of a palm tree on the left side. The water is dark and reflects the colors of the sunset.

In a chamber A Judge is having a chat with a warring couple. The husband refuses the interim maintenance complaining that his wife is employed and earning well. In the course of the communication the wife blames the judge to be partial. In the next session the husband alleged that the judge is partial !

Why did the wife reach the conclusion ?

What are the words probably shared by the judge that provoked the wife ?

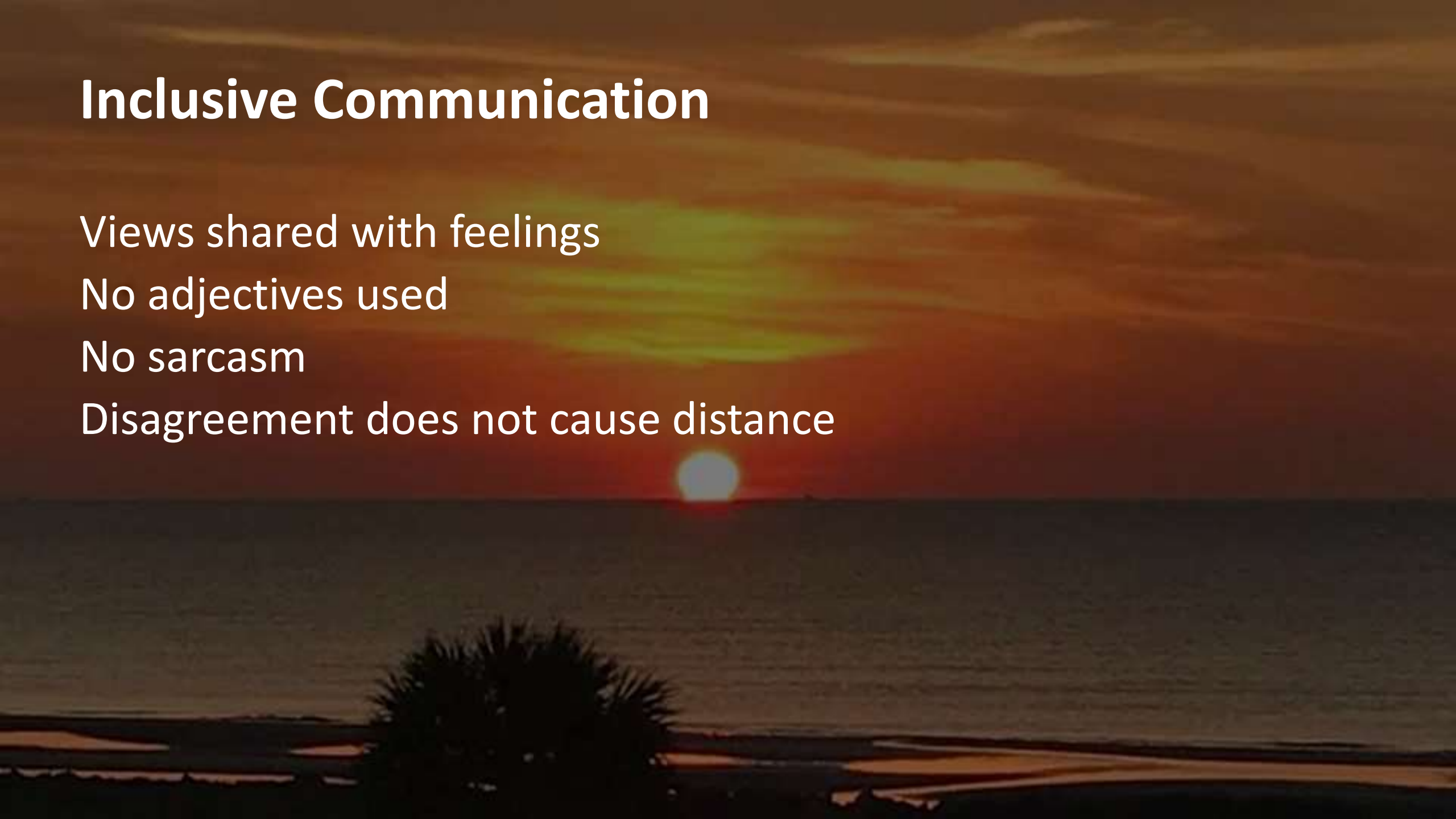
# Inclusive Communication

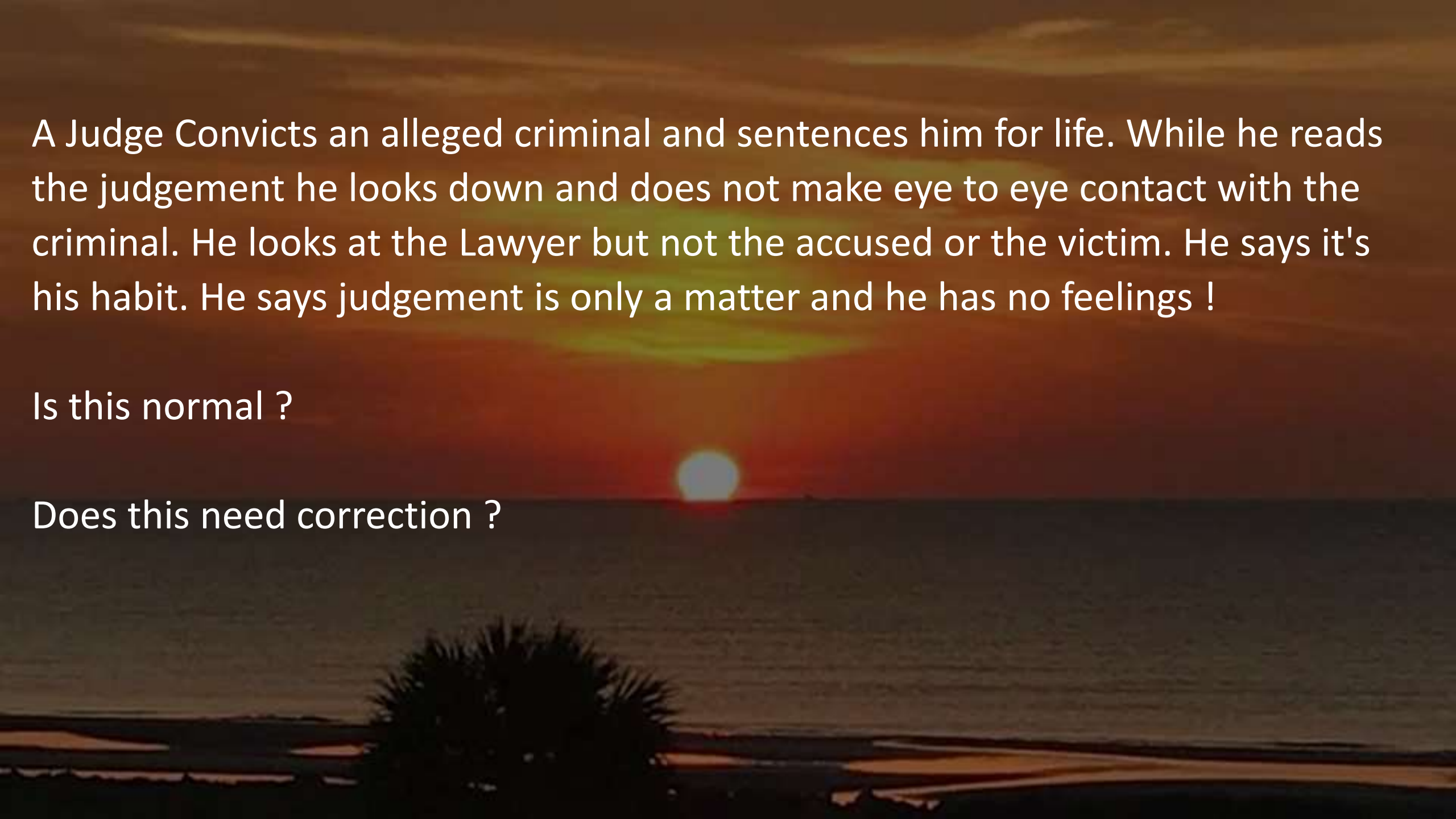
Views shared with feelings

No adjectives used

No sarcasm

Disagreement does not cause distance



A sunset over the ocean with a palm tree silhouette in the foreground. The sky is a mix of orange, red, and yellow, with the sun low on the horizon. The water is dark, and the foreground shows a dark silhouette of a palm tree and some beach elements.

A Judge Convicts an alleged criminal and sentences him for life. While he reads the judgement he looks down and does not make eye to eye contact with the criminal. He looks at the Lawyer but not the accused or the victim. He says it's his habit. He says judgement is only a matter and he has no feelings !

Is this normal ?

Does this need correction ?

# Neutral Communication

A sunset over the ocean with a palm tree silhouette in the foreground. The sky is a mix of orange, red, and yellow, with the sun low on the horizon. The water is dark, and the foreground shows a dark silhouette of a palm tree and some beach elements.

Passive Neutrality

Dynamic Neutrality

Fulfilling Neutrality

Derogatory Neutrality

# Stressed Communication

A sunset over the ocean with a palm tree silhouette in the foreground. The sky is a mix of orange, red, and yellow, with the sun low on the horizon. The water is dark, and the foreground shows a dark silhouette of a palm tree and some beach elements.

Pressured speech

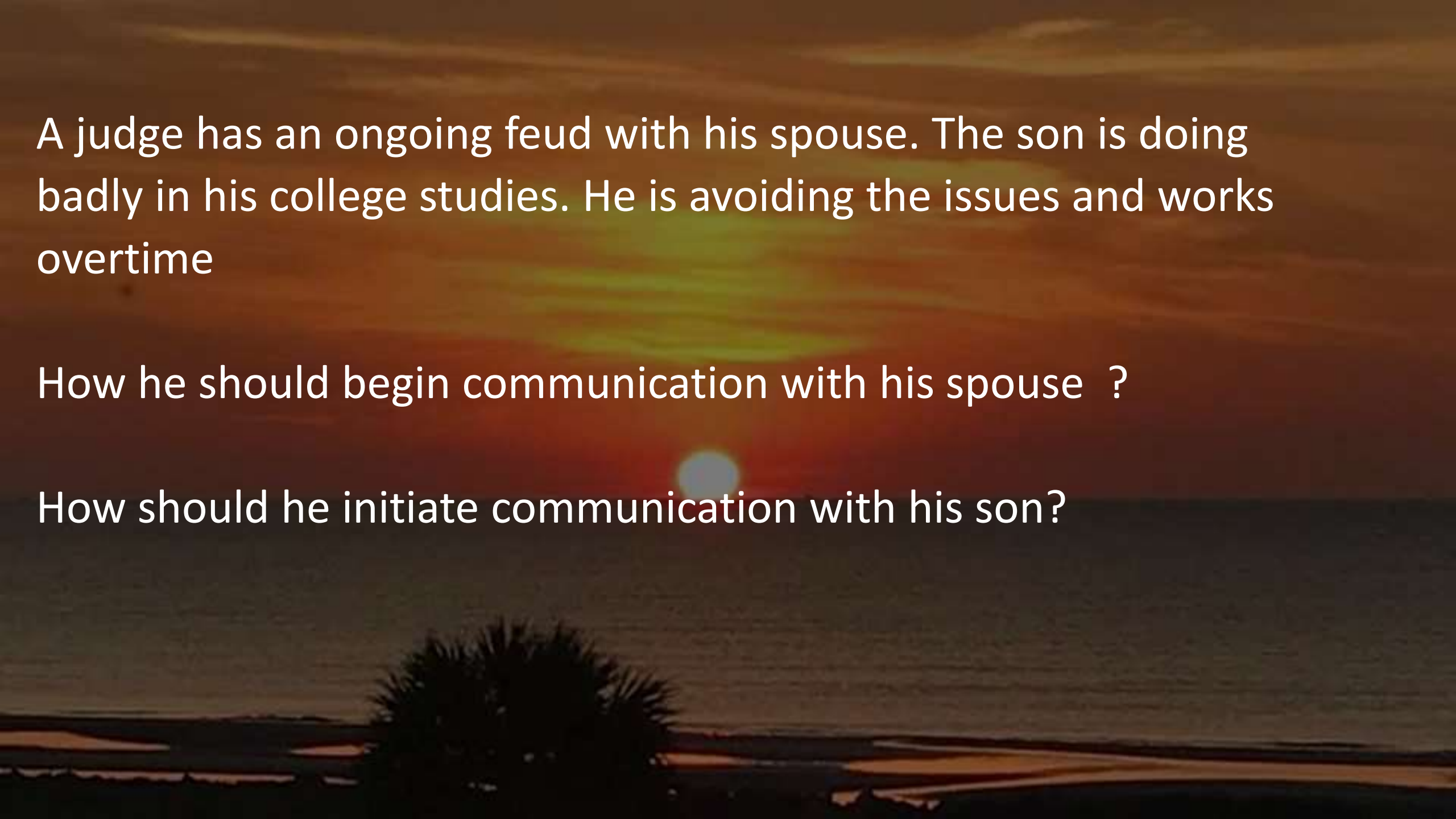
Errors & omissions

Slow or charged

Impaired judgement

Bias & prejudiced



A sunset over a beach with a palm tree silhouette in the foreground. The sky is a mix of orange, red, and yellow, with the sun low on the horizon. The water is dark, and the beach is visible in the foreground.

A judge has an ongoing feud with his spouse. The son is doing badly in his college studies. He is avoiding the issues and works overtime

How he should begin communication with his spouse ?

How should he initiate communication with his son?

# Communication Strategies

A sunset over the ocean with a palm tree silhouette in the foreground. The sun is a bright white circle on the horizon, surrounded by a red glow. The sky transitions from red to orange and then to a dark brown at the top. The ocean is dark and calm, reflecting the colors of the sky. In the foreground, there is a dark silhouette of a palm tree on the left side.

Attitude

Honesty

Openness

Reflect

Repair